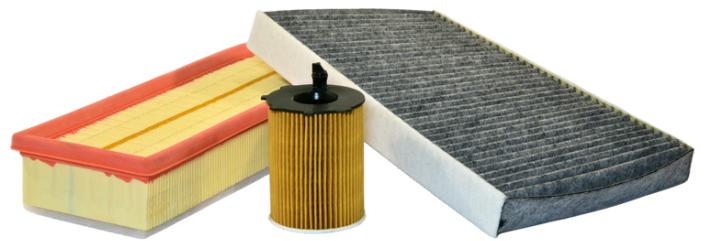


OFFICIAL PRODUCT BROCHURE



NEX
FILTER



NEX FILTER.
For Passenger Cars.

PRODUCT RANGE **FILTRATION:**



NEX FILTER: BY RYVER FLOW

NEX Filter (NEX) is Ryver Flow's in-house brand of filtration solutions, designed to meet the demands of modern engines across passenger, commercial, and industrial vehicles. Built with precision and tested for performance, NEX filters offer reliable protection against impurities, extending engine life and maintaining optimal performance over time.

Engineered to match or exceed OEM standards, NEX Filter provides a seamless fit and dependable function for a wide range of vehicle brands and models — from everyday cars to heavy-duty applications.

Whether it's oil, fuel, or air filtration, every NEX product is developed with three key priorities in mind:

- **Durability** — Built with high-grade materials to withstand heat, pressure, and contaminants.
- **Compatibility** — Designed to fit a broad spectrum of global vehicle brands and models.
- **Efficiency** — Supports cleaner engine operation and optimized fuel usage.

With NEX, customers get trusted performance, accessible pricing, and the confidence of a brand backed by Ryver Flow's commitment to quality.

FILTRATION PORTFOLIO



OIL FILTER

Our high-performance oil filters are engineered to provide superior filtration efficiency, **ensuring the engine remains clean and protected from harmful contaminants**. Designed to meet or exceed OEM specifications, our oil filters **extend engine life and improve overall vehicle performance**.

FUEL FILTER

Our fuel filters are designed to **protect the fuel system by removing impurities** such as dirt, rust, and water from the fuel before it reaches the engine. Clean fuel is essential for **optimal combustion, lower emissions, and enhanced fuel efficiency**.



AIR FILTER

Our air filters **deliver optimal airflow** while **trapping dust, pollen, soot, and other airborne contaminants**, ensuring clean air reaches the engine for **improved combustion efficiency**. Clean air intake is crucial for engine health, performance, and fuel economy.

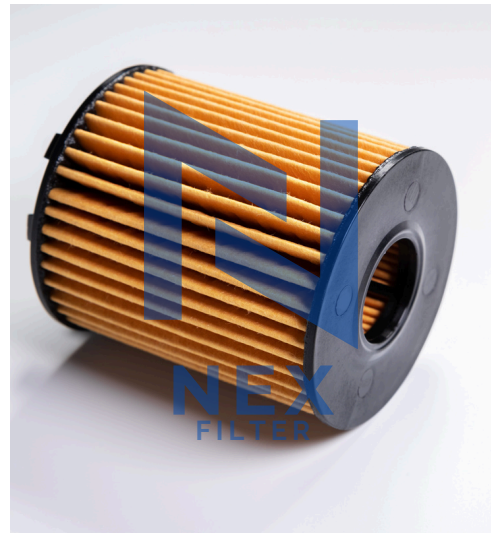


OEM COMPATIBLE FILTRATION SOLUTIONS



Our in-house filtration products are expertly developed to **meet the stringent quality and performance standards** of leading automotive manufacturers, including Proton, Perodua, Honda, Toyota, and other popular vehicle brands. We understand that every engine is engineered differently.

Hence, **NEX filters** are **designed with precision, durability, and efficiency** in mind.



"100% ZERO LEAK TEST PERFORMED."



Each filter is manufactured to **OEM specifications**, ensuring a seamless fit and reliable function across supported vehicle platforms. Whether it's a local compact car or a high-performance Japanese & Continental sedan, our filters **provide optimal protection and performance** for a wide range of models.

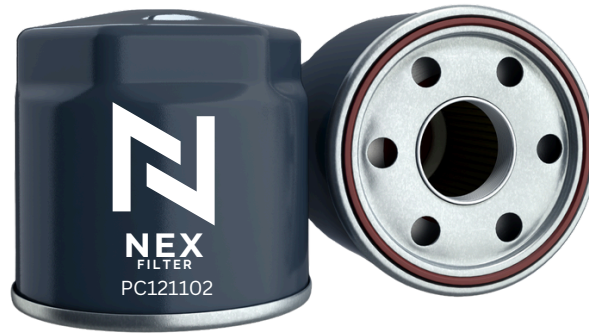
Quality You Can Trust:

- ISO/TS Certified Manufactured Filters
- Tested for Pressure, Flow Rate, and Efficiency
- Validated in Real-World Driving Conditions
- Consistent Quality Control Across Production Batches



FILTRATION PRODUCTS

**BEYOND DISTRIBUTION.
BEYOND GROWTH.**



Model : Saga (BLM, FL, FLX, VVT) / Persona (CM6, VVT) / Wira / Waja / Gen 2 / Satria / Satria Neo / Putra / Arena / Juara / Exora (CFE, CPS) / Preve / Surpima S / Inspira / Iriz / Perdana (1st & 2nd Gen) / Ertiga

Filter Type	Part Number
Oil Filter	PC121102

Model : X50 / X70 / X90 / S70

Filter Type	Part Number
Oil Filter	1056022300



Model : Saga (BLM, FL, FLX, VVT) / Persona (CM6, VVT) / Iriz / Preve (non-turbo) / Exora (CPS)

Filter Type	Part Number
Air Filter	PW911458

Model : X50

Filter Type	Part Number
Air Filter	2032040500

Model : X90

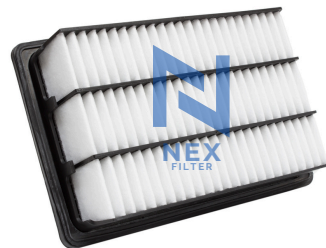
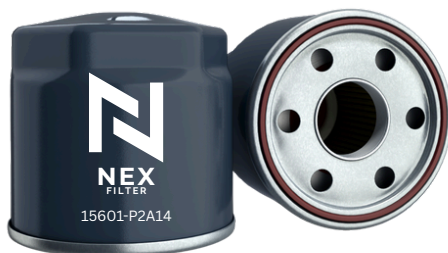
Filter Type	Part Number
Air Filter	2032043300

Model : X70

Filter Type	Part Number
Air Filter	2032007600

Model : S70

Filter Type	Part Number
Air Filter	2032039700



Model : Axia / Bezza / Myvi (including D20N and D51A) / Aruz / Ativa/ Alza (D27A) / Viva / Kancil / Kelisa / Kenari / Kembara / Rusa

Filter Type	Part Number
Oil Filter	15601-P2A14

Model : Axia / Bezza 1.0L

Filter Type	Part Number
Air Filter	17801-BZ140

Model : Aruz (2019 - Present)

Filter Type	Part Number
Air Filter	17801-BZ150

Model : Bezza 1.3L

Filter Type	Part Number
Air Filter	17801-63R02

Model : Alza (2019 - 2022)

Filter Type	Part Number
Air Filter	17801-BZ030

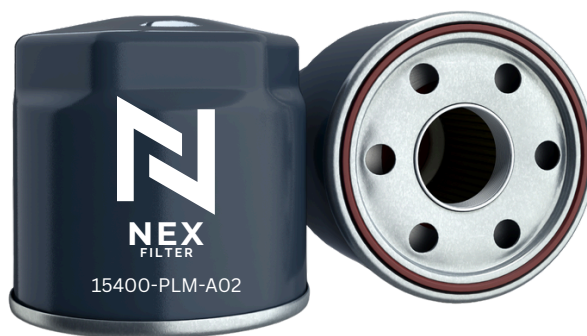
Model : Myvi 1.0L / Viva 1.0L

Filter Type	Part Number
Air Filter	17801-73R10

Model : Alza / Ativa (Present)

Filter Type	Part Number
Air Filter	17801-BZ110

HONDA



Model : Accord / City / Civic / CR-V / BR-V / HR-V / Jazz / Odyssey

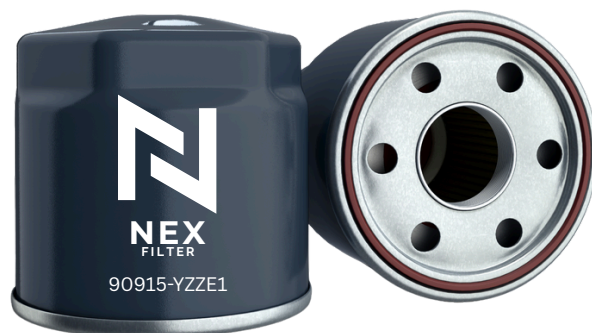
Filter Type	Part Number
Oil Filter	15400-PLM-A02

MAZDA



Model : MAZDA 2 / MAZDA 3 / MAZDA 5 / MAZDA 6 / MAZDA CX-3 /
MAZDA CX-5 / MAZDA CX-7 / MAZDA CX-9

Filter Type	Part Number
Oil Filter	PE01-14-302B



Model : Vios (NCP42, NCP93, NCP150) / Altis (ZZE121, ZZE122, ZZE141, ZZE142) / Camry (SXV10, SXV20) / Wish (ZNE10) / Avanza (F601) / Yaris / Unser

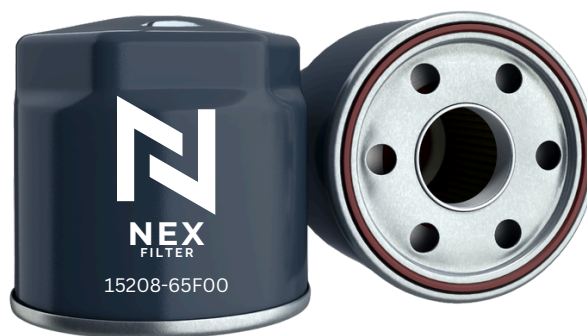
Filter Type	Part Number
Oil Filter	90915-YZZE1

Model : Alphard (ANH10, ANH20) / Vellfire / Camry (ACV30, ACV40) / Estima (ACR30, ACR50) / Harrier (ACU30, ACU35) / Wish (ANE10) / Sienta (NSP170) / Prius C (NHP10)

Filter Type	Part Number
Oil Filter	90915-YZZE2

Model : Hilux (KUN25, GUN125) / Fortuner (TGN51) / Hiace (KDH200) / Camry (SXV10, SXV20, MCV20) / Estima Lucida (TCR10/20) / Prado (RZJ95) / Crown (JZS175) / Lexus LS400 (UCF10)

Filter Type	Part Number
Oil Filter	90915-YZZD2



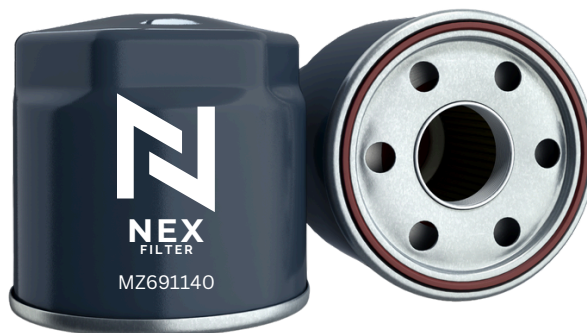
**Model : Almera N17L / Grand Livina L10L (1.6/1.8) / Sylphy G11L /Serena C24
/ X-Trail T30/T32 / Sentra N16 / Teana J32L / Murano TZ50/TZ51**

Filter Type	Part Number
Oil Filter	15208-65F00

Model : Cefiro A31/A32/A33 / Teana / X-Trail T30 / Sylphy 2.0/3.0

Filter Type	Part Number
Oil Filter	15208-31U00

mitsubishi



Model : New XPANDER

Filter Type	Part Number
Oil Filter	MZ691140

Model : Triton 4 x 4

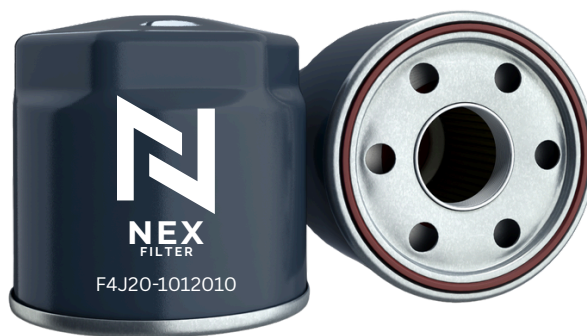
Filter Type	Part Number
Oil Filter	ME014838

ISUZU

ISUZU

Model : D-Max / MU-X

Filter Type	Part Number
Oil Filter	8-98165071-0

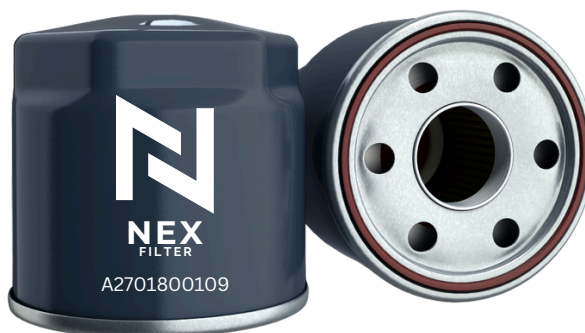


Model : TIGGO 7 Pro / TIGGO 8 Pro

Filter Type	Part Number
Oil Filter	F4J20-1012010

Model : OMODA 5

Filter Type	Part Number
Oil Filter	480-1012010



Model : A-Class (W176/W177) / B-Class (W246/W247) / C-Class (W205) / CLA-Class (C117) / E-Class (W213) / GLA-Class (X156/H247) / GLC-Class (X253/C253)

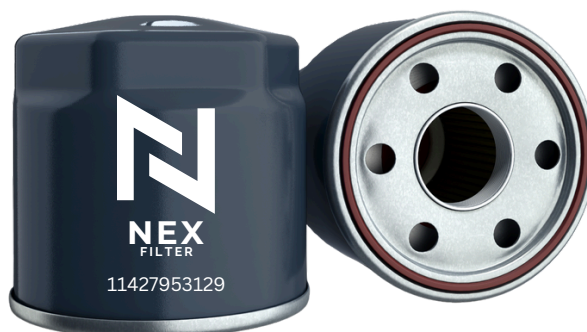
Filter Type	Part Number
Oil Filter	A2701800109

Model : C-Class (W204/W205) / E-Class (W212/W213) / S-Class (W221/W222) GLC-Class (X253/C253)

Filter Type	Part Number
Oil Filter	A2761800009

Model : A-Class (W176) / C-Class (W205) / E-Class (W212/W213) / AMG GT

Filter Type	Part Number
Oil Filter	A2781800009



Model : 1 Series (E81–F22) / 3 Series (E90–F34) / 4 Series (F32–F36) / 5 Series (E60–F11) / 6 Series (E63–F13) / 7 Series (E65–F04) / X1 (E84) / X3 (E83/F25) / X5 (E70/F15) / X6 (E71/F16) / Z4 (E85–E89)

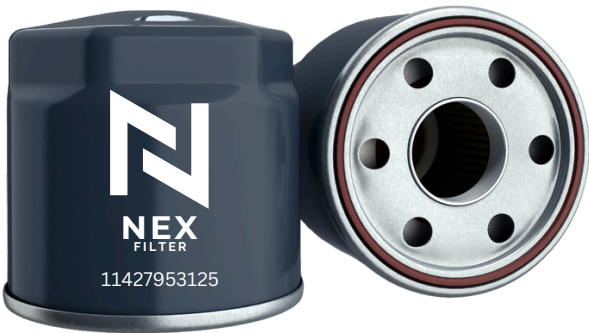
Filter Type	Part Number
Oil Filter	11427953129

Model : 5 Series (E60/E61) / 6 Series (E63/E64) / 7 Series (E65/E66/E67) / X5 (E53)

Filter Type	Part Number
Oil Filter	11427511161

Model : 1 Series (E81–E88) / 3 Series (E46/E90/E92) / 5 Series (E60/E61) / X1 (E84) / X3 (E83) / Z4 (E85)

Filter Type	Part Number
Oil Filter	11427508969



Model : 1 Series (F20/F21) / 2 Series (F22/F87) / 3 Series (F30/F34) / 4 Series (F32/F36) / 5 Series (F10) / X1 (E84) / X5 (F15/F85) / Z4 (E89)

Filter Type	Part Number
Oil Filter	11427953125

GET IN TOUCH



CONTACT US:



+603 7932 4997



www.ryverflow.com.my



sales@ryverflow.com.my



Unit No. 807 Block A, Pusat Dagangan Phileo
Damansara 1, 9 Jalan 16/11, Off, Jln Damansara,
46350 Petaling Jaya, Selangor

**BEYOND DISTRIBUTION.
BEYOND GROWTH.**